



JIANGSU SKYRUN WUXI CO;LTD,CHINA



5

Factories



50 +

Happy Clients



20 +

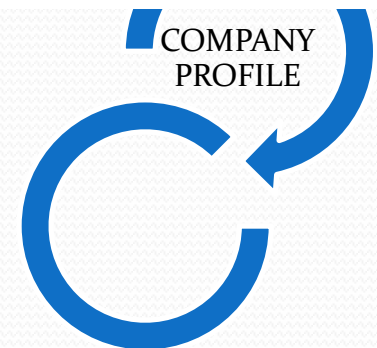
Years Of Growth With
Our Customers



95 %

Customer Satisfaction

www.jiangsuskyrun.com





Company Introduction

Jiangsu Skyrun Wuxi co; Ltd has established a reputation in the competitive international & domestic markets as one of the fastest growing Fabric , Accessories & Garments Supplier in Bangladesh & China, which founded in 1993, location is wuxi, Jiangsu,. We are present in China & Bangladesh.

Skyrun projecting innovative excellences, efficient service and custom-made & buyer required development with grant facilities. High quality products with strong technical professionals and best after sales service is our main strength We ensuring desired services & solutions with time frame as well as best functional and professional way with customer satisfaction which leading businesses more efficient and sustainable.

We have 5 different operational associates factories which altogether an area of 100000 square meters ,7000 stuff , yearly Turnover around 10 Million dollar.

We keep a long-term cooperation with Bestseller, Bench, Esprit, Debenhams, Dekko, Natural Group, Fakir Group, Square Group, Viyellatex, DBL and so on. It's our honor to be awarded GOLD SUPPLIER of Esprit for good quality guarantee, strong product development and production capacity.

We develop strategies that enable businesses to leverage into our worldwide development, sourcing & delivery capability which provide a competitive advantage for cost, quality, service and innovation, while ensuring socially responsible operating practices.

We look forward to serving you soon and we feel confident that you will enjoy doing business with us.



Enterprise core competence



Trade Area

Garments
Fabric
Accessories



R&D Capability

ODM/OEM Service
Own Brand Development



Certifications

Oeko-Tex Factories, BCI Cotton,
REACH (Aezo and nickel free
Products)



Trade Capability

Export Experience: 20years
Trade Value: Around 10Million.
Providing Trade Assurance

Why Choose Us



SMS Facilities

SMS Lead Time 10-15days



On-time Delivery

Smaller Leadtime And On-time Delivery



Better Quality Control

Inline Quality Control, Sales After Service.



Development Support

We'll Provide You Wide Range Of Development
Support



Competitive Price

Ex-work , FOB , CIF ,C&F



Meet Test Requirement

Oeko-Tex, ITS , SGS , TUV

Trade Ability



Export Zone : China, Bangladesh, USA, Europe
Export Mode : Have Own Export License
No Of Employees in Trade Department : 10-12 People

Business Terms

Accepted Delivery Terms: : FOB, CFR, CIF, EXW, Express Delivery
Accepted Payment Currency : USD, HKD, CNY
Accepted Payment Type : T/T, L/C, PayPal, Western Union, Cash
Nearest Port : Guangzhou, Foshan, Shanghai, Shenzhen, Ningbo





Factory name	Main products	Address
JIANGSU SKYRUN WUXI CO; LTD.	Knit : Cotton, Poly, Nylon, Viscose, Spandex,Fleece, Scuba,Mesh, Velvet,Jacquard, Ponte Roma Woven : Cotton, Poly, Nylon, Sateen,Silk, Microfibre , Spandex, Linen, Modal, Tafetta, Viscose/Rayon, Cupra,Chiffon, Jacquard.	28/F,88 xianqian, East Street, Wuxi, Jiangsu, China. Website: www.jiangsuskyrun.com
WUXI HENGYANG WEAVE CO;LTD.	Denim Fabric: Poly-cotton -spandex,Tencel, color denim, Knit Denim)	No. 123 Xingyuan Road, Changjing Town, Jiangyin City, Wuxi, Jiangsu, China, P.C :214411 Website: www.hydenim.com
NANJING JIAMEI GARMENTS ACCESSORIES FACTORY.	Accessories: Drawcord, PVC ,Zipper,Pullar Tag, Metal Item, Buttons, Lace, Rihnstone, pearl,Leather patch, Handmade patches etc	Jinniu Industrial Zone, Babaiqiao Town, Liuhe District, Nanjing, Jiangsu, China (Mainland) Website: njjiamei.en.alibaba.com
CHANGZOU VERACITY TEXTILE CO;Ltd.	100 % Export Oriented garments (Knit,Woven)	No. 3, West Renmin road,Hutang Town,Wujing District, Changzou, PO 213161, Jiangsu, China Website: veracity@skyrunbd.com
SILVERSHINE STITCH & DESIGN LTD.	100 % Export Oriented garments (Knit,Woven)	Zirabo, Ward no 08, Fulbagan, Zirabo,Ashulia, Savar, Dhaka, Bangladesh. Website: silvershine@skyrunbd.com
SKYRUN	Trades , Services & Sourcing	Plot:764, Road:10,Avenue:06, Mirpur DOHS, Dhaka-1216, Bangladesh. Website: www.skyrunbd.com



Non Denim fabric

Knit Fabric

Woven Fabric



Satin



Tefetta



Silk/Cotton/Blended



Linen/Cotton



Microfibre



Nylon,
Cotton, Spandex



Polyester,
Cotton, Spandex



Rayon Viscose
cotton Blended

Non Denim fabric

Knit Fabric

Woven Fabric



Denim Fabrics

Stretch Denim

Indigo Denim

Polyester / Cotton / Spx /
Blended Denim

Knit Denim

Color Denim

Tencel



Quality | Service | Creative

ACCESSORIES

Metal Item

Metal Button

Zipper

Zipper Puller

Zipper Slider

Lace

Drawcord

Button

Rhinestone /Pearl

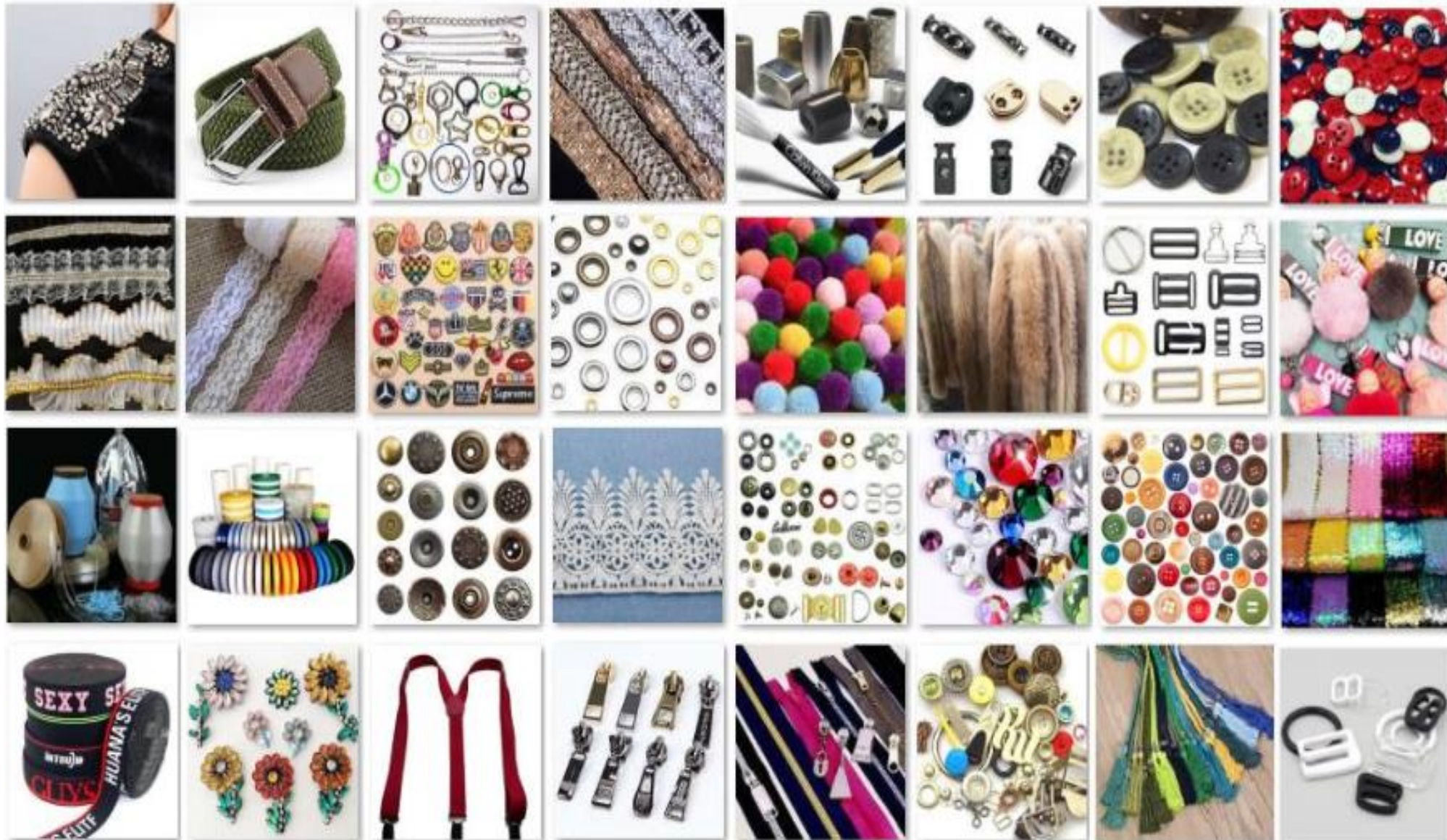
Belt

Leather Badge

Silicon,PVC & Heat Transfer
Level

Weaving tape

Bow



Mens

Womens

Kids Items



Mens

Womens

Kids Items



T-shirt

Polo Shirt



Tops

Tank Top



Sweater

Hoodie



Sweatshirt

Jacket



Innerwear

Trouser



Jeans

Mens

Womens

Kids Items





Our Services

Quotation Lead time:

within 24hour

Production Lead time

Sample Development: 5-7 days

SMS Lead Time: 10-15 days(ETD China)

Bulk Lead Time: 15-35 days (ETD China)

For urgent order, could be faster, please send email to negotiate.

Customer Service:

24 Hours /7 Days

Ordering Information:

After all necessary approval, & initial deposit ,we go for production

This rule is not applicable for regular clients

30% advanced payment ,the balance paid before shipment.

Please send email to negotiate payment term if you have other offer.



Bank Details

Bank Asia , Bangladesh

Account name: SKYRUN

Account No: 60533000313

Bank: Bank Asia Ltd, Kazipara, Branch, Mirpur, Dhaka, Bangladesh

Phone: +88 017 1106 8036

CTC: Firoz Al Mamun

Bank Of China

Account name: Jiangsu Skyrun WUXI Co., Ltd

Account No: 502758228049

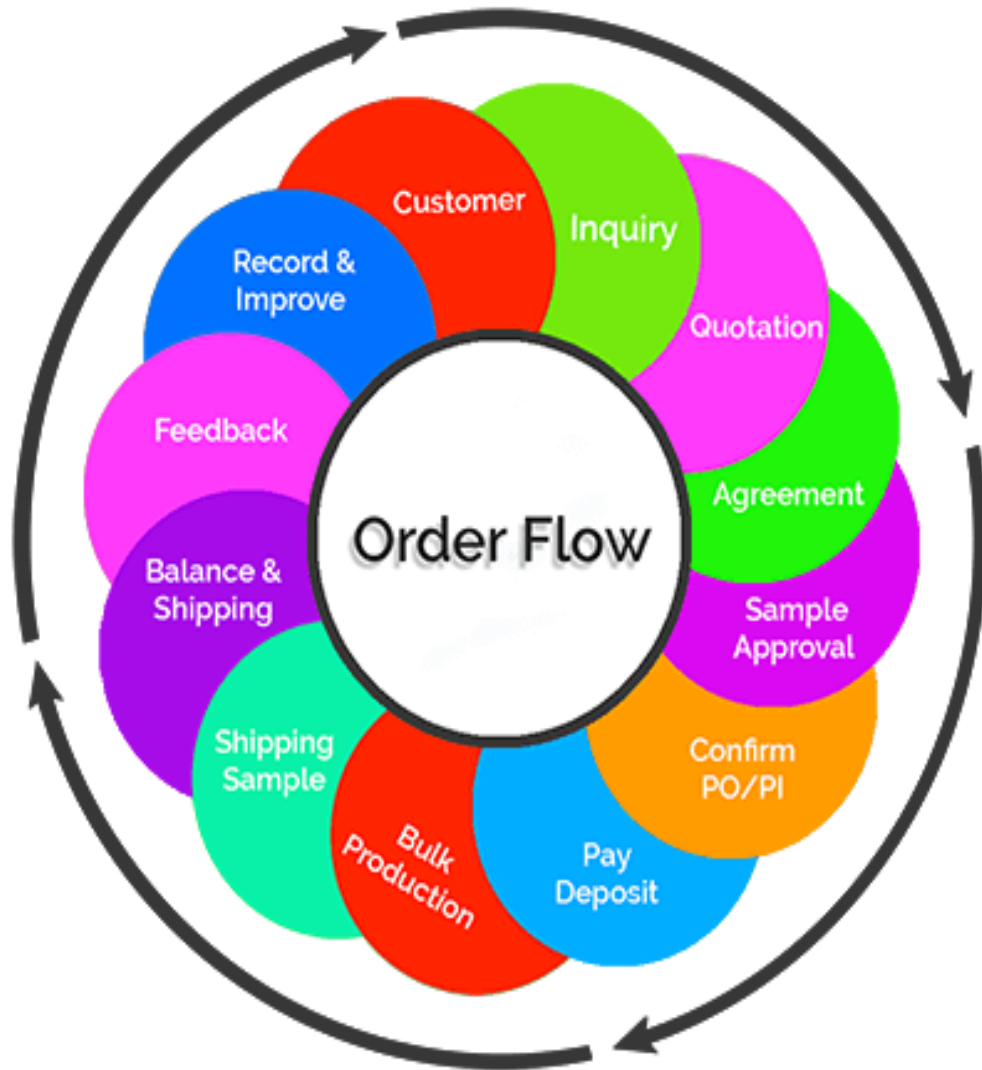
Bank: Bank Of China WUXI Branch

Address: 258 Zhonshan Road, WUXI Jiangsu, China

Swift: BKCHCNBJ95C

How To Make An Order

Packaging & Delivery



Packaging Details (Trims)

1. 1000pcs in a pp bags, 10bags in a export carton.
2. customer's special packing are welcome
3. carton size: 40*28*26*cm weight: 0.6kg

Packaging Details (Fabric)

1. In roll packing with tubes inside and plastic bags outside
2. customer's special packing are welcome
3. 100-150m /roll, weight around 35-40 Kg

Packaging Details (Garments)

1. One piece/set per poly bag, Final pit in carton. (56x48x42cm)
2. customer's special packing are welcome

Shipping Leadtime

- By Sea: 13-20 days
- By Air: 3 -5 days
- By Courier: 3 -5 days

Major Buyers



Bench.

ESPRIT

DEBENHAMS



DEWHIRST
EST.1880

Mission & Vision

We invest quality time and effort in finding solutions of our client's need. We give high importance while making sales to the satisfaction of our clients. By balancing between price and quality, we give them the notion of partnership, which results in a win-win situation for both of us. So it is not only products and services that we give, we at the same time deliver the satisfaction and sense of reliability of our customers.

We want to take over the upcoming opportunities, we always keep an eye into the future and accordingly take necessary preparations for it. The anticipation of growth for the global market of readymade garments is going to enlarge significantly within the next few years, we are already keeping the necessary outsourcing to meet the demands in a competitive way and at the same time being responsible for environmental issues.

Research & Development

Skyrun has an in-house very professional technical & product development team that is continuously involved in analyzing the latest trends in the apparel industry. This effort culminates in the development of product collections for the potential and existing clients round the year. Our design team has extensive knowledge of the different products and finishing technologies and are able to work directly with customers to suggest innovative and cost-effective solutions to various design challenges. Skyrun also provides a comprehensive product development where our customers can work side by side with our design team to experiment and develop samples. This reduces the cost and time required for product development.



Quality Assurance

Quality has made our service value, Skyrun is committed to ensure all activities through documented quality management system (QMS) complying the requirement of ISO 9001 in every phase of manufacturing and Quality assurance.

Skyrun undertakes appropriate review, evaluations and performance measurement of its operation to ensure compliance with quality policy and continual improvement of the Quality Management System. the most progressive and dynamic business leader in the country. Square believes in using advanced technology to cope with the changing world. Innovation and diversification are its major strengths.

Sustainability

In Skyrun, sustainability has a special place embedded in the core values of the organization. It is an ongoing process that requires dedication, cooperation of our efforts & teamwork. The organization is attaining sustainable growth through its various CSR and Compliance activities, and is effectively coping up with the constantly changing concepts.

Code Of Conduct

- There is no child labor in the factory.
- There is no forced labor.
- All necessary measures are ensured for hazard free, safe working places.
- Workers have all the right to form any kind of committee or Union as per prevailing law of state.
- There is no discrimination in employment on the basis of gender, race, religion, age, disability, sexual orientation, nationality, political opinion or social or ethnic origin.
- Procedures are ensured as per labor law and followed in consistent with avoidance of abusive practices.
- Standard working hours are ensured in accordance with law.
- Salaries are paid in strict compliance of the law.
- The factory complies with all applicable local environmental, safety and health regulations.
- The factory complies with all related current legalization in the different applicable areas.
- The use of corporal punishment, mental or physical coercion and verbal abuse are forbidden.

China Office

Royal Zhang

Jiangsu Skyrun WUXI Co.Ltd; China

Director of Textile & Garmant Dept.

Address: 28/F,88 XIANQIAN EAST STREET,WUXI,JIANGSU,CHINA p.c.:214005

Phone: +86 189 1535 9703

Fax: +86-510-82301152

Email: royal-njtex@263.net

Bangladesh Office

MD: Firoz Al Mamun

Skyrun

Manager Sales & promotion

Address: Plot:764, Road:10,Avenue:06, Mirpur DOHS, Dhaka-1216,

Bangladesh

Phone: +8801711068036

WhatsApp: +8801711068036

WeChat: +8801515605160

Skype: [firoz_mamun](https://www.skype.com/people/firoz_mamun)

Fax: +88 20 5807 0205

Email: firoz-mamun@skyrunbd.com

Contact us



Thank You